

PROTEA HOUSE

Eastwood Office Park

**Lynnwood Road,
Pretoria**



LOCATION



MACRO LOCATION



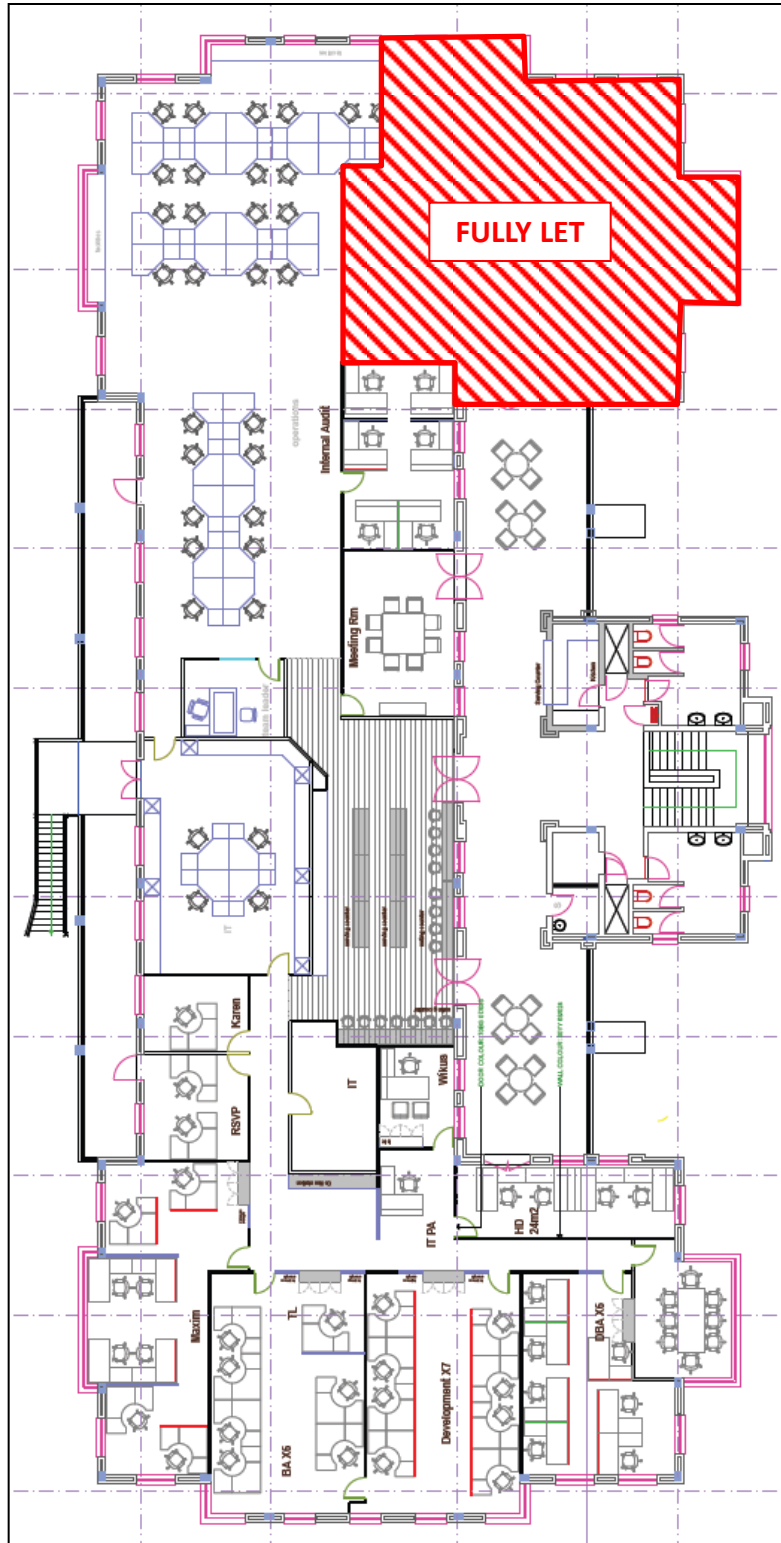
MICRO LOCATION

FACT SHEET

PROTEA HOUSE (FIRST FLOOR)

Rentable Office Area (Sub-div)	730 m ²
Store Area	38.50 m ²
Basement Parking Bays	13 bays
Covered Parking Bays	21 bays
Open Parking Bays	9 bays
Rental:-	
Office Area	R 100.00 per m ² per month
Store Area	R 60.00 per m ² per month
Generator Rental	R 2.50 per m ² per month
Basement Parking Bays	R 650.00 per bay per month
Covered Parking Bays	R 450.00 per bay per month
Open Parking Bays	R 350.00 per bay per month
Operating Costs	R 25.80 per m ² per month
Assessment Rates	R 13.13 per m ² per month
Lease Period	3 / 5 years
Escalation	8.5% per annum
Occupation	Immediately

PROTEA HOUSE FIRST FLOOR



CONTACT



OFFICE | (011) 706 7030

ROB TILSTON | 082 823 8104

NICK EASTWOOD | 082 416 2597

